



## 6 BEDROOM EQUESTRIAN FOR SALE IN LOUTH

Price **£2,500,000**

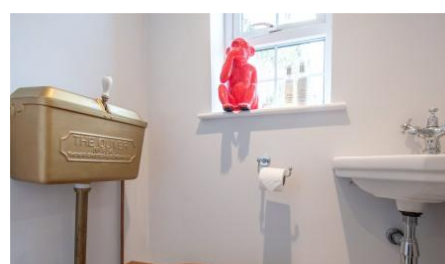
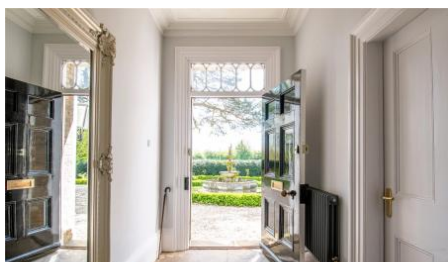
REF: 3513983



### PROPERTY FEATURES

Equestrian Living of the highest level -The Priory is truly an extraordinary property which offers the very best lifestyle for an owner and horses alike with a fabulous home and annex set in enviable grounds of over fourteen acres alongside one of the finest home Equestrian Centres available.

## PROPERTY PHOTOS









LOCATION

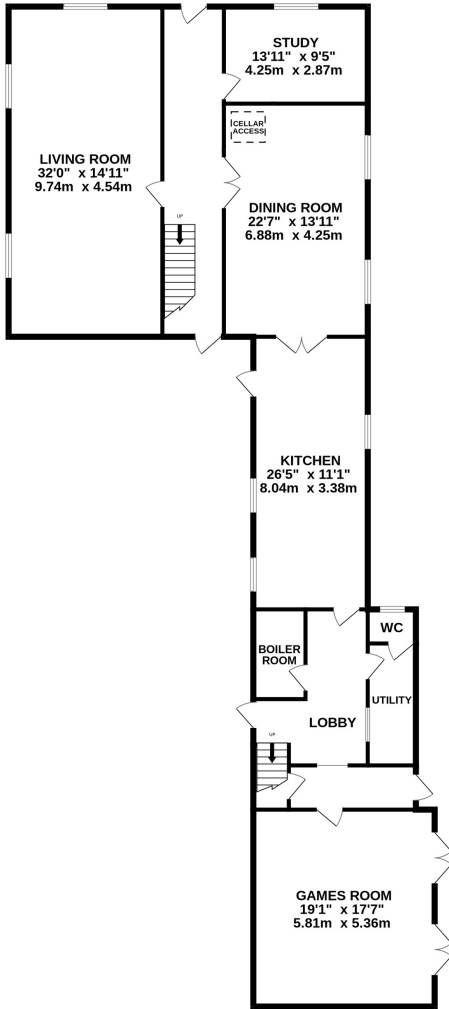


EPC

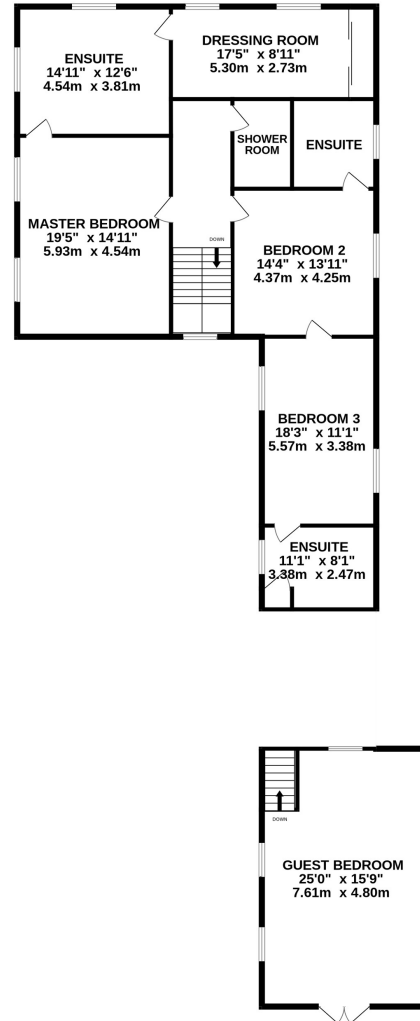
Energy Efficiency Rating		Current	Potential
Very energy efficient - lower running costs			
(92+)	A		
(81-91)	B		
(69-80)	C		
(55-68)	D		67
(39-54)	E	41	
(21-38)	F		
(1-20)	G		
Not energy efficient - higher running costs			
England, Scotland & Wales		EU Directive 2002/91/EC	

FLOORPLANS

GROUND FLOOR  
2046 sq.ft. (190.1 sq.m.) approx.



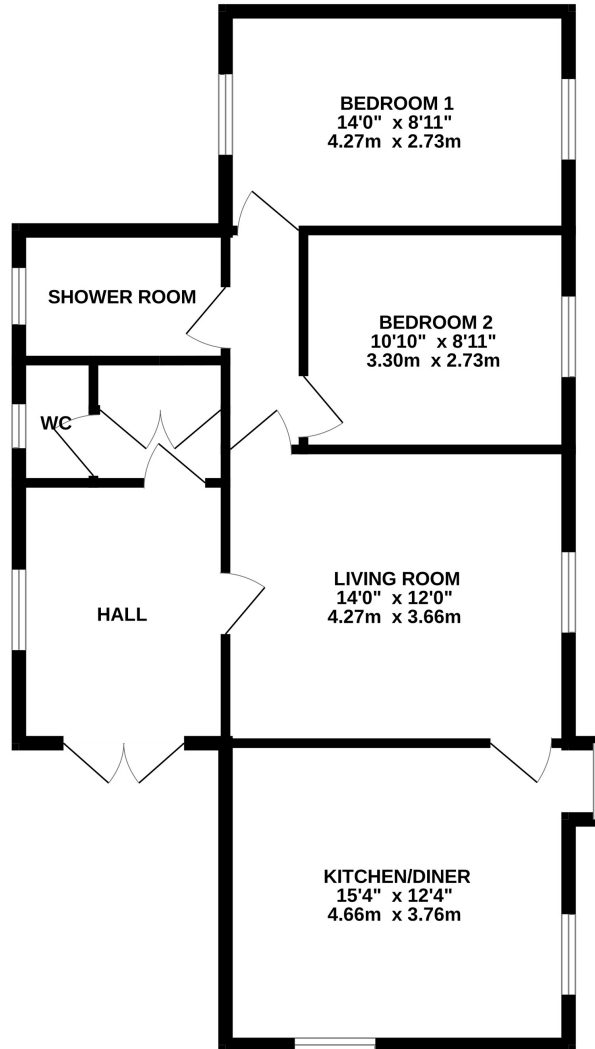
1ST FLOOR  
1949 sq.ft. (181.0 sq.m.) approx.



TOTAL FLOOR AREA : 3995 sq.ft. (371.1 sq.m.) approx.

Whilst every attempt has been made to ensure the accuracy of the floorplan contained here, measurements of doors, windows, rooms and any other items are approximate and no responsibility is taken for any error, omission or mis-statement. This plan is for illustrative purposes only and should be used as such by any prospective purchaser. The services, systems and appliances shown have not been tested and no guarantee as to their operability or efficiency can be given.  
Made with Metropix ©2024

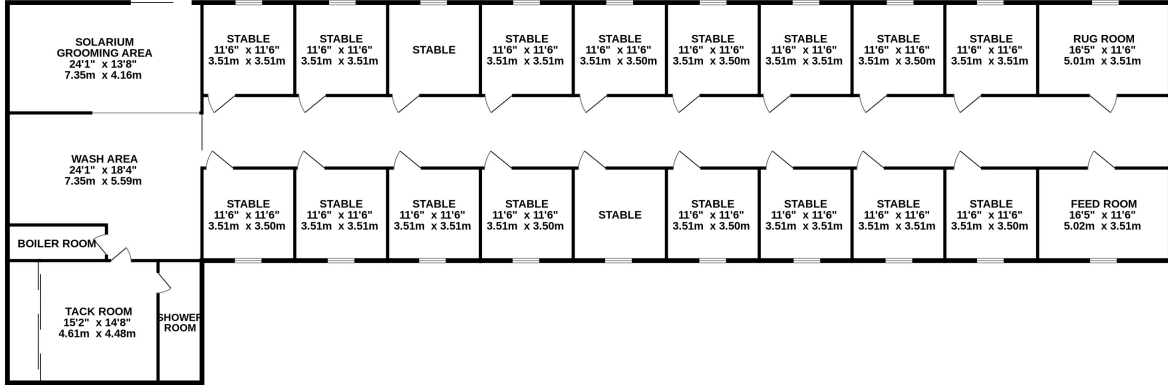
GROUND FLOOR  
772 sq.ft. (71.7 sq.m.) approx.



TOTAL FLOOR AREA : 772 sq.ft. (71.7 sq.m.) approx.

Whilst every attempt has been made to ensure the accuracy of the floorplan contained here, measurements of doors, windows, rooms and any other items are approximate and no responsibility is taken for any error, omission or mis-statement. This plan is for illustrative purposes only and should be used as such by any prospective purchaser. The services, systems and appliances shown have not been tested and no guarantee as to their operability or efficiency can be given.  
Made with Metropix ©2024

**STABLE COMPLEX**  
4974 sq.ft. (462.1 sq.m.) approx.



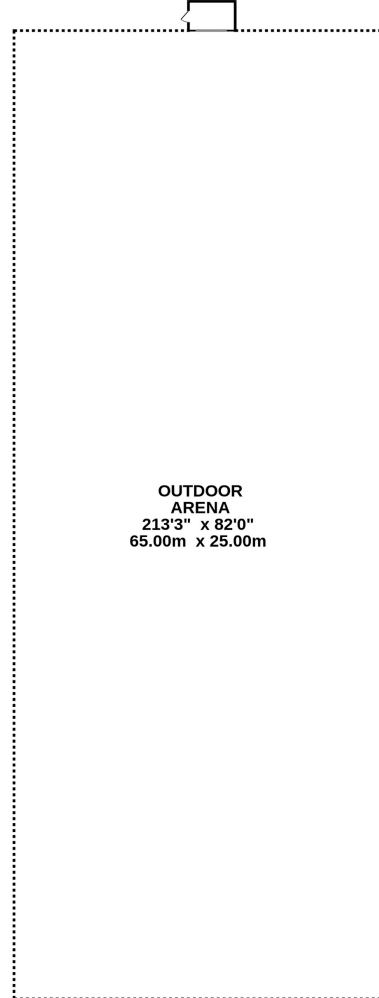
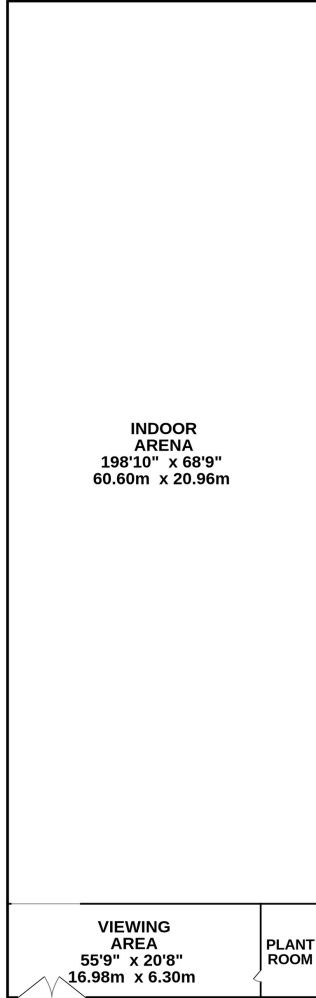
TOTAL FLOOR AREA : 4974 sq.ft. (462.1 sq.m.) approx.

Whilst every attempt has been made to ensure the accuracy of the floorplan contained here, measurements of doors, windows, rooms and any other items are approximate and no responsibility is taken for any error, omission or mis-statement. This plan is for illustrative purposes only and should be used as such by any prospective purchaser. The services, systems and appliances shown have not been tested and no guarantee as to their operability or efficiency can be given.  
Made with Metropix ©2024



INDOOR ARENA  
15093 sq.ft. (1402.2 sq.m.) approx.

OUTDOOR ARENA  
17557 sq.ft. (1631.1 sq.m.) approx.



TOTAL FLOOR AREA: 32650 sq.ft. (3033.3 sq.m.) approx.

Whilst every attempt has been made to ensure the accuracy of the floorplan contained here, measurements of doors, windows, rooms and any other items are approximate and no responsibility is taken for any error, omission or mis-statement. This plan is for illustrative purposes only and should be used as such by any prospective purchaser. The services, systems and appliances shown have not been tested and no guarantee as to their operability or efficiency can be given.  
Made with Metropix ©2024