



Hollybank House

La Rue des Huriaux

St Martin

Jersey

JE3 6AF

£16,000,000

FC124

FREEHOLD - Presenting Hollybank House, a truly exquisite coastal estate of manorial proportions, encompassing approximately 16,000 square feet of luxurious living space. Set within circa 36 acres of prime Jersey countryside, this magnificent home offers breathtaking views extending to France and stands as one of the island's most impressive residences.

The residence is a masterpiece of architectural elegance, constructed in 1990, the house is a statement of refinement and sophistication set amidst serene surroundings and accessed through an impressive set of gates and a long, tree-lined driveway.

The property features exceptional grounds, including equestrian paddocks, an all-weather riding manège, irrigated horse gallop, floodlight sand school and an additional 7,000 square feet of ancillary buildings, including an office suite, staff / guest accommodation and garaging for multiple vehicles, providing immense flexibility for any future owner.

The expansive grounds and meticulously landscaped gardens create a tranquil retreat, perfect for those seeking an exclusive and peaceful environment. You can enjoy direct access from the grounds to the charming harbour of Rozel, where you will find fishing boats, brightly coloured holiday homes, and a beachside café.

As you enter Hollybank House, a warm ambiance awaits with a welcoming entrance featuring an open fire and a sweeping staircase, setting the tone for the elegance and comfort that awaits within. The courtyard, adjacent to the entrance adds a touch of charm to the estate, featuring a reinstated bakehouse where the present owners enjoy the pleasures of old-fashioned cooking periodically. Inside the house, you can enjoy four spacious reception rooms, perfect for entertaining guests in style, a large family kitchen and six comfortable bedroom suites. A vast indoor pool and gym complex complete the home.

For further information please contact Margaret Thompson or Rebecca Sokrati.





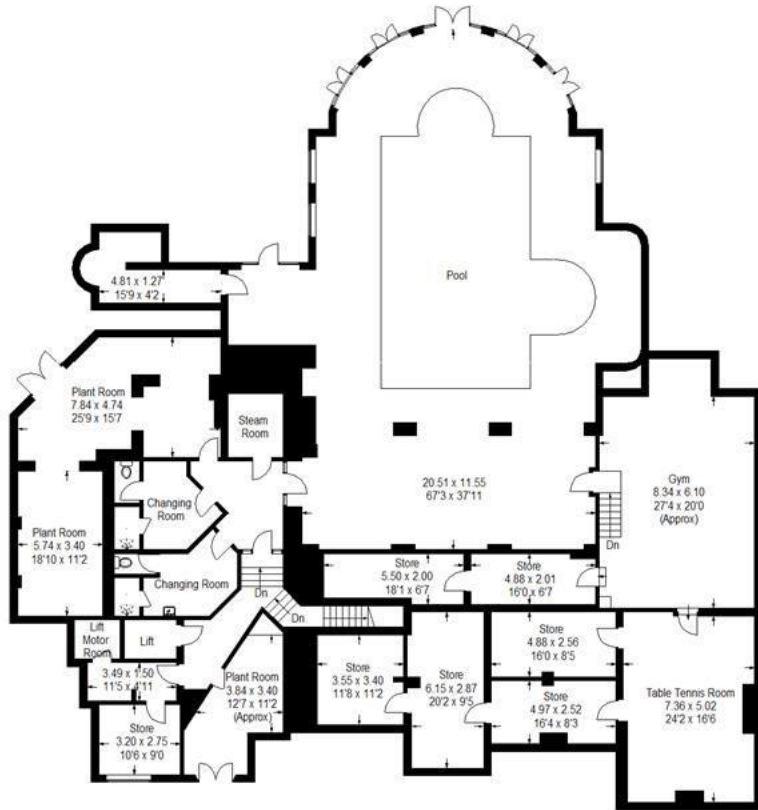




Hollybank House

Approximate Gross Internal Area (including Pool / Lift / Loft / Excluding Gallery) = 1585 1 sq m / 17062 sq ft
 Mezzanine = 9 4 sq m / 101 sq ft
 Total = 1594 5 sq m / 17163 sq ft

--- Reduced headroom below 1.5 m / 5'0"



Basement

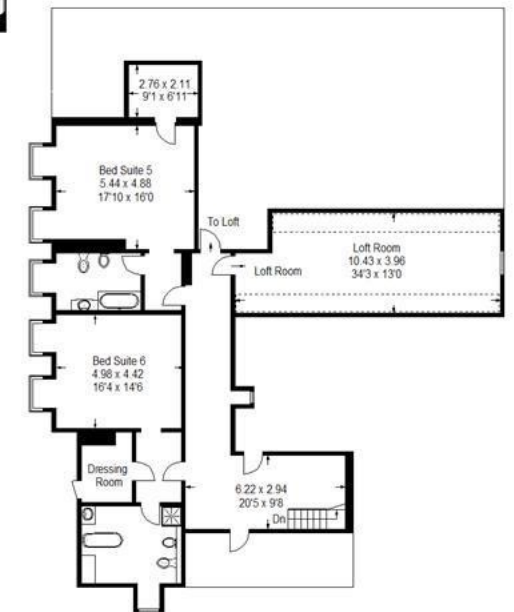


Mezzanine

First Floor



Ground Floor



Second Floor

Whilst every attempt has been made to ensure the accuracy of the floorplan contained here, all measurements are approximate and no responsibility is taken for any errors.

Illustration for identification purposes only, measurements are approximate, not to scale.
 FloorplansUsketch.com © 2015 (D169183)

Outside

2 Large apartments, 2 two bedroom units, garaging for 5 cars and substantial storage facilities. Exquisite parkland gardens, woodland and exceptional equestrian facilities including 8 loose boxes, extensive paddocks, a fully irrigated sand gallop and a state of the art sand school.

Services

Oil fired central heating

Mains services

Borehole water for irrigation

Directions

From 5 Oaks travel towards St Martin. After Maufant turn left onto La Rue de Hucquet, head straight over at the cross roads and continue on La Rue de Hucquet. At the T-junction turn right and take the first left into Rue des Huriaux. The gates are located at the end of the lane straight ahead.

Call us on

01534 888855

jersey@fineandcountry.com

www.fineandcountry.je

5 King Street, St Helier, Jersey, JE2 4WF

MONEY LAUNDERING REGULATION - Once an offer is accepted and negotiations for the purchase of a property are entered into, the prospective purchasers will be asked to produce photographic identification and proof of residency documentation, e.g. current utility bill and ID. This is in order for us to comply with the current Money Laundering Legislation.

Fine & Country Jersey advises prospective purchasers that we have prepared these sales particulars as a general guide only. We have not carried out a detailed survey, nor tested the services, appliances and specified fittings. Room sizes are approximate and rounded; they are taken between internal wall surfaces and therefore include cupboards/shelves etc, accordingly they should not be relied upon when purchasing fittings. Carpet, curtains/blinds and kitchen equipment, whether fitted or not, are deemed to be removable by the vendor unless specifically itemised within these particulars and/or within the property inventory. These particulars are supplied on the understanding that all negotiations are conducted through Fine & Country Jersey, their accuracy is not guaranteed nor do they form part of any contract.